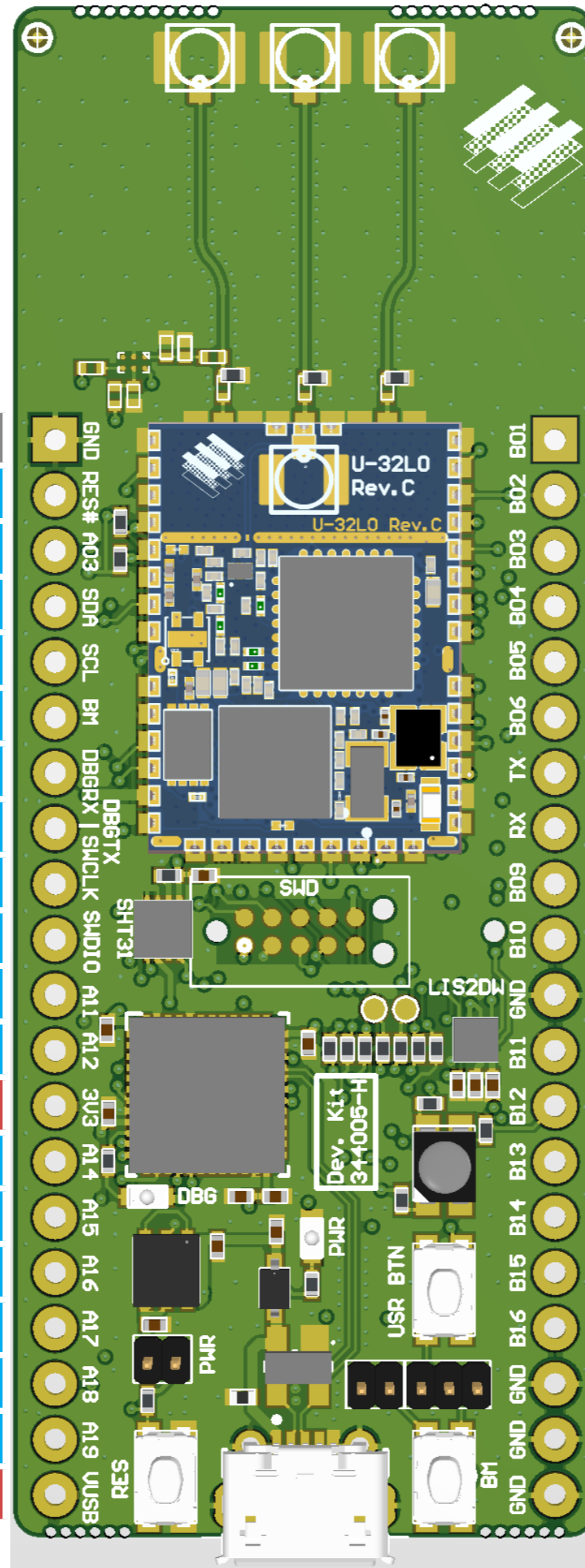


FMLR-72-STM
DEV-FMLR-STEVK1

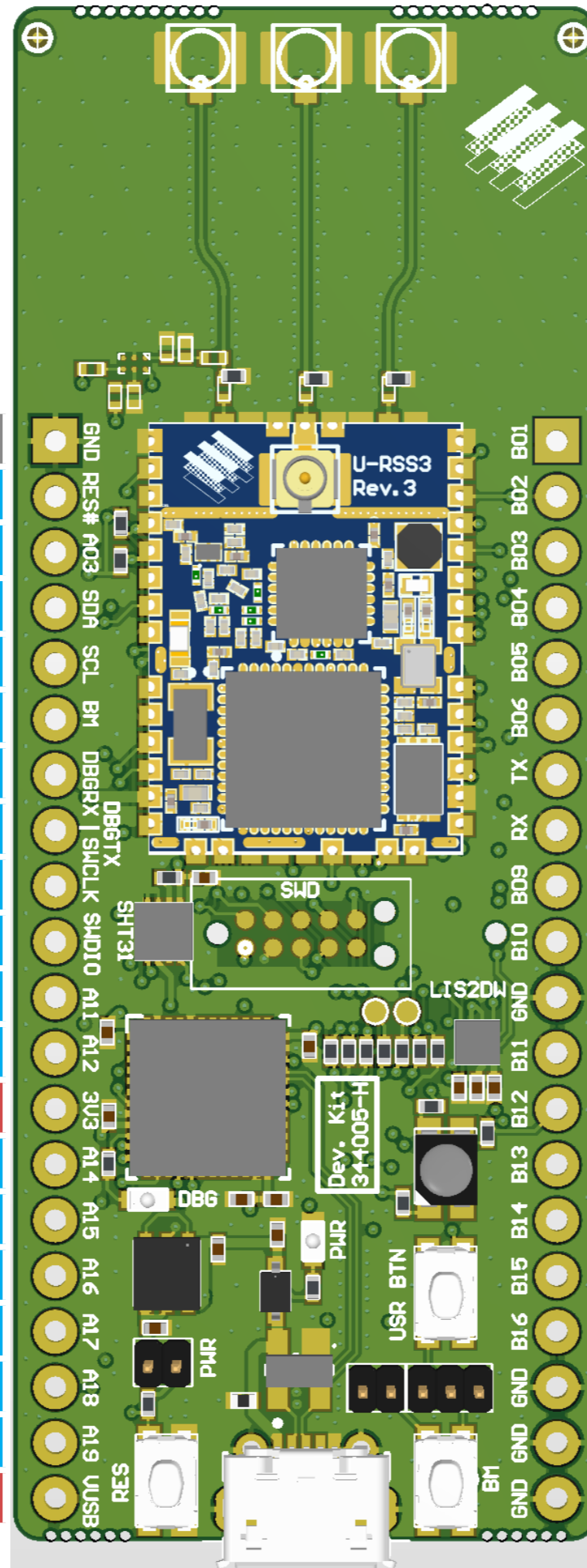
FUNCTION	MCU PAD
GND	GND
RESET	RSTN
I/O	PC13
I2C1_SDA	PB9
I2C1_SCL	PB6
BOOT0	BOOT0
USART1_RX	PA10
USART1_TX	PA9
SWCLK	PA14
SWDIO	PA13
I/O	PA12
I/O	PA11
3V3	3V3
I/O	PC7
I/O	PC6
I/O	PC10
I/O	PC11
I/O	PA15
I/O	PD2
VUSB	VUSB



MCU PAD	FUNCTION
PB0	I/O
PA0	SWITCH
PB1	I/O
PA2	USART2_TX
PA3	USART2_RX
PA5	I/O
PB5	SPI1_MOSI
PB4	SPI1_MISO
PB3	SPI1_SCK
PB2	I/O
GND	GND
PA8	I/O
PC1	LED B
PH1	LED G
PH0	LED R
PB7	I/O
PC12	I/O
GND	GND
GND	GND
GND	GND

FMLR-61-REN
DEV-FMLR-RSEVK2

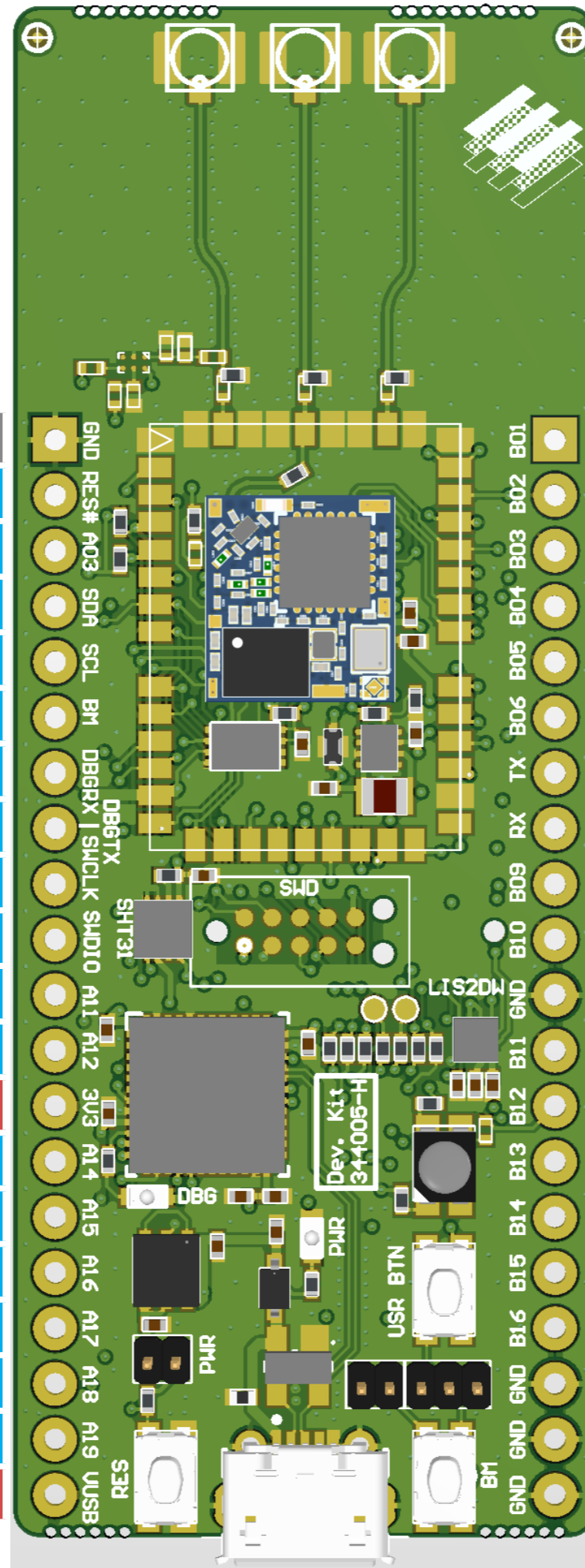
FUNCTION	MCU PAD
GND	GND
RESET	RES#
I/O	P013
SDA0	P407
SCL0	P400
BOOT	MD#
RXD9	P110
TXD9	P109
SWCLK	P300
SWDIO	P108
I/O	P914
I/O	P915
3V3	3V3
I/O	P206
I/O	P401
NC	-
NC	-
NC	-
NC	-
VUSB	VUSB



MCU PAD	FUNCTION
P000	I/O
P001	I/O
P002	I/O
P409	TXD9
P408	RXD9
P010	I/O
P302	MOSI2
P301	MISO2
P111	SCK2
P011	I/O
GND	GND
P012	I/O
P014	LED B
P212	LED G
P213	LED R
-	NC
P112	I/O
GND	GND
GND	GND
GND	GND

FMLR-61-MAX
DEV-FMLR-MAEVK3

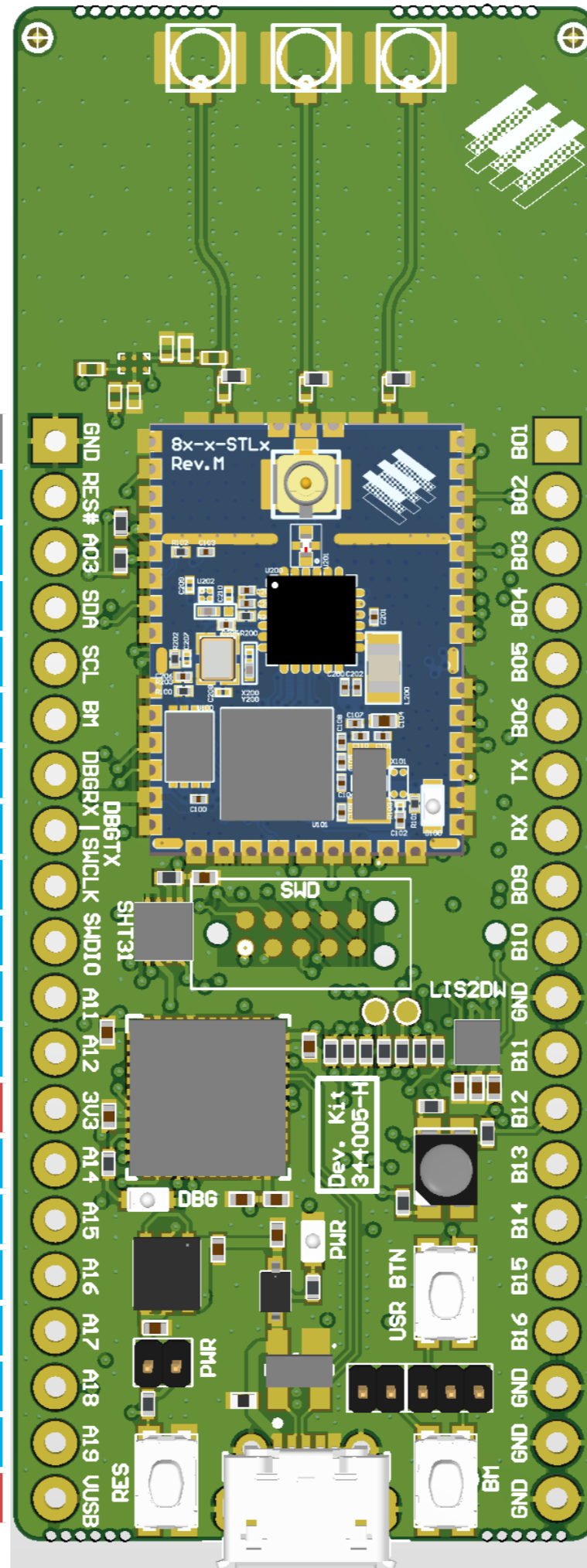
FUNCTION	MCU PAD
GND	GND
RESET	SRSTN
I/O	P1.4
I2CM0_SDA	P1.6
I2CM0_SCL	P1.7
I/O	P1.3
USART0A_RX	P0.0
USART0A_TX	P0.1
Debug	SWCLK
Debug	SWDIO
I/O	P1.0
AIN2	AIN2
3V3	3V3
I/O	P1.5
I/O	P2.0
I/O	P2.1
I/O	P2.2
I/O	P2.3
I/O	P3.2
VUSB	VUSB



MCU PAD	FUNCTION
P4.3	I/O
P3.7	I/O
P0.2	I/O
P3.0	USART2A_TX
P3.1	USART2A_RX
P3.3	I/O
P2.5	SPIM2A_MOSI
P2.6	SPIM2A_MISO
P2.4	SPIM2A_SCK
P4.0	I/O
GND	GND
P4.1	I/O
P3.5	LED B
P4.2	LED G
P3.4	LED R
AIN0	AIN0
P3.6	I/O
GND	GND
GND	GND
GND	GND

FMLR-80-STM
DEV-FMLR-STEVK4

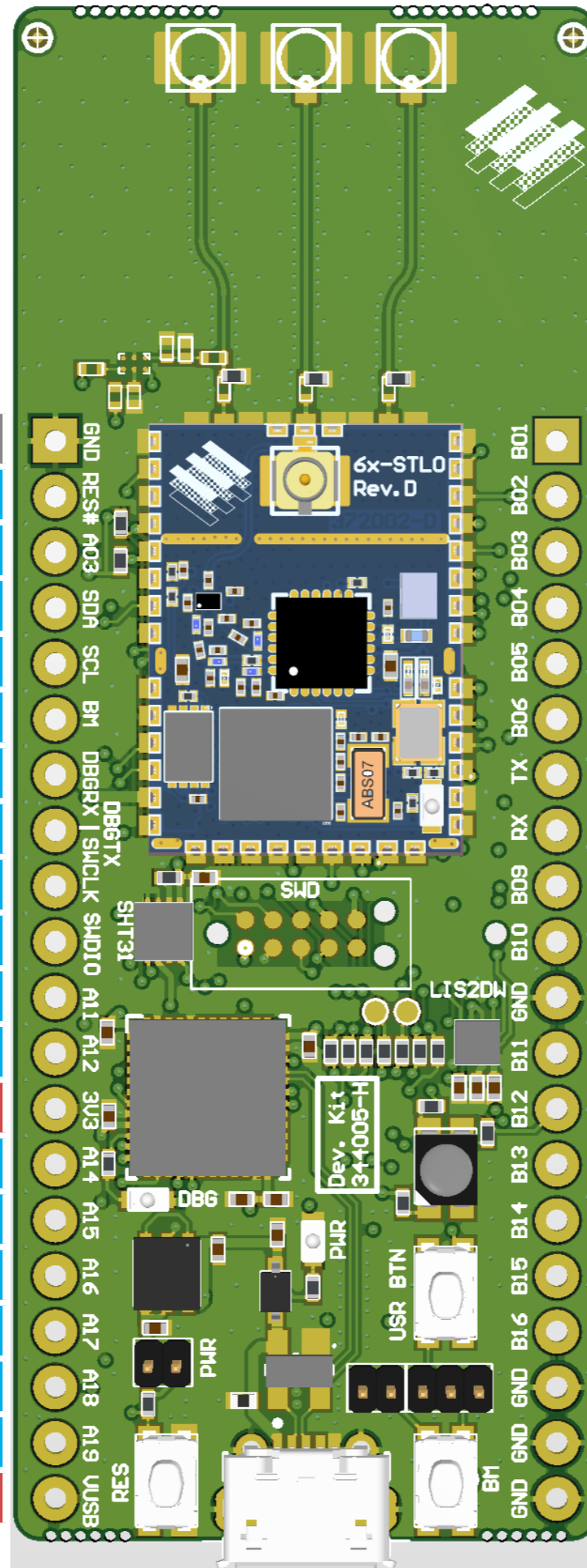
FUNCTION	MCU PAD
GND	GND
RESET	RSTN
I/O	PC13
I2C1_SDA	PB9
I2C1_SCL	PB6
BOOT0	BOOT0
USART1_RX	PA10
USART1_TX	PA9
SWCLK	PA14
SWDIO	PA13
I/O	PA12
I/O	PA11
3V3	3V3
I/O	PC7
I/O	PC6
I/O	PC10
I/O	PC11
I/O	PA15
I/O	PD2
VUSB	VUSB



MCU PAD	FUNCTION
PB0	I/O
PA0	SWITCH
PB1	I/O
PA2	USART2_TX
PA3	USART2_RX
PA5	I/O
PB5	SPI1_MOSI
PB4	SPI1_MISO
PB3	SPI1_SCK
PB2	I/O
GND	GND
PA8	I/O
PC1	LED B
PH1	LED G
PH0	LED R
PB7	I/O
PC12	I/O
GND	GND
GND	GND
GND	GND

FMLR-61-STM
DEV-FMLR-STEVK5

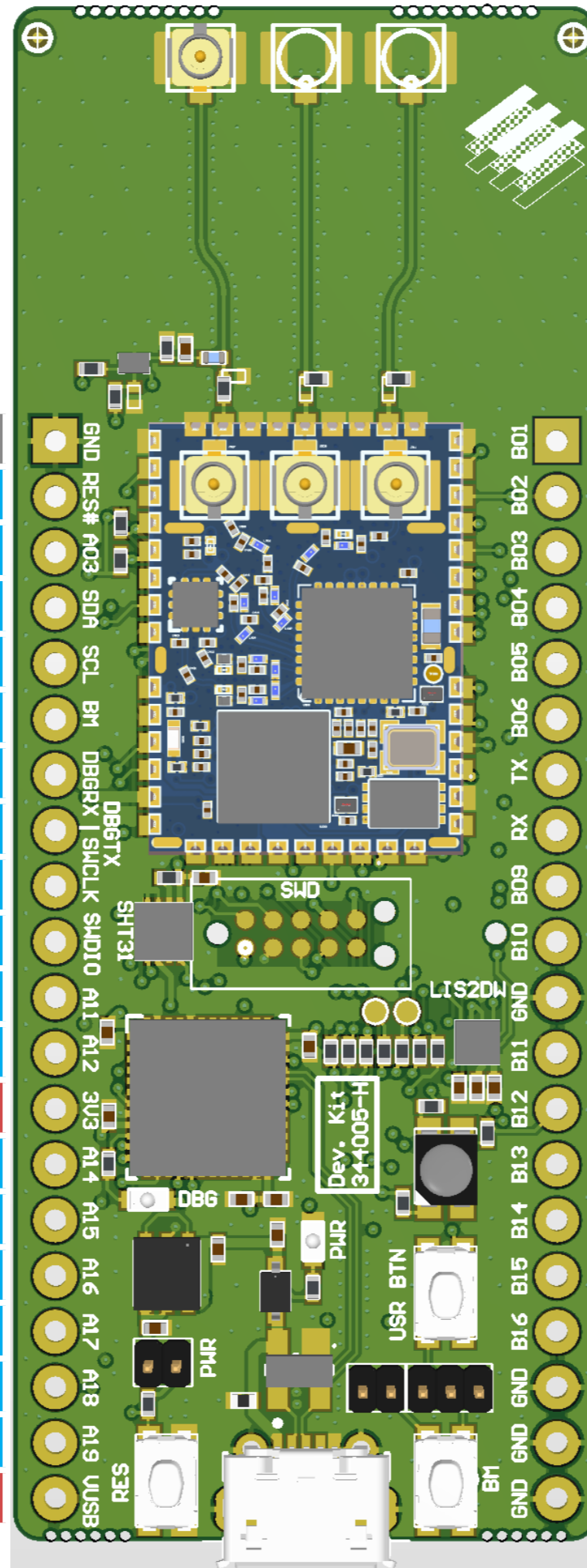
FUNCTION	MCU PAD
GND	GND
RESET	RSTN
I/O	PC13
I2C1_SDA	PB9
I2C1_SCL	PB6
BOOT0	BOOT0
USART1_RX	PA10
USART1_TX	PA9
SWCLK	PA14
SWDIO	PA13
I/O	PA12
I/O	PA11
3V3	3V3
I/O	PC7
I/O	PC6
I/O	PC10
I/O	PC11
I/O	PA15
I/O	PD2
VUSB	VUSB



MCU PAD	FUNCTION
PB0	I/O
PA0	SWITCH
PB1	I/O
PA2	USART2_TX
PA3	USART2_RX
PA5	I/O
PB5	SPI1_MOSI
PB4	SPI1_MISO
PB3	SPI1_SCK
PB2	I/O
GND	GND
PA8	I/O
PC1	LED B
PH1	LED G
PH0	LED R
PB7	I/O
PC12	I/O
GND	GND
GND	GND
GND	GND

FMLR-1110-STM
DEV-FMLR-STEVK6

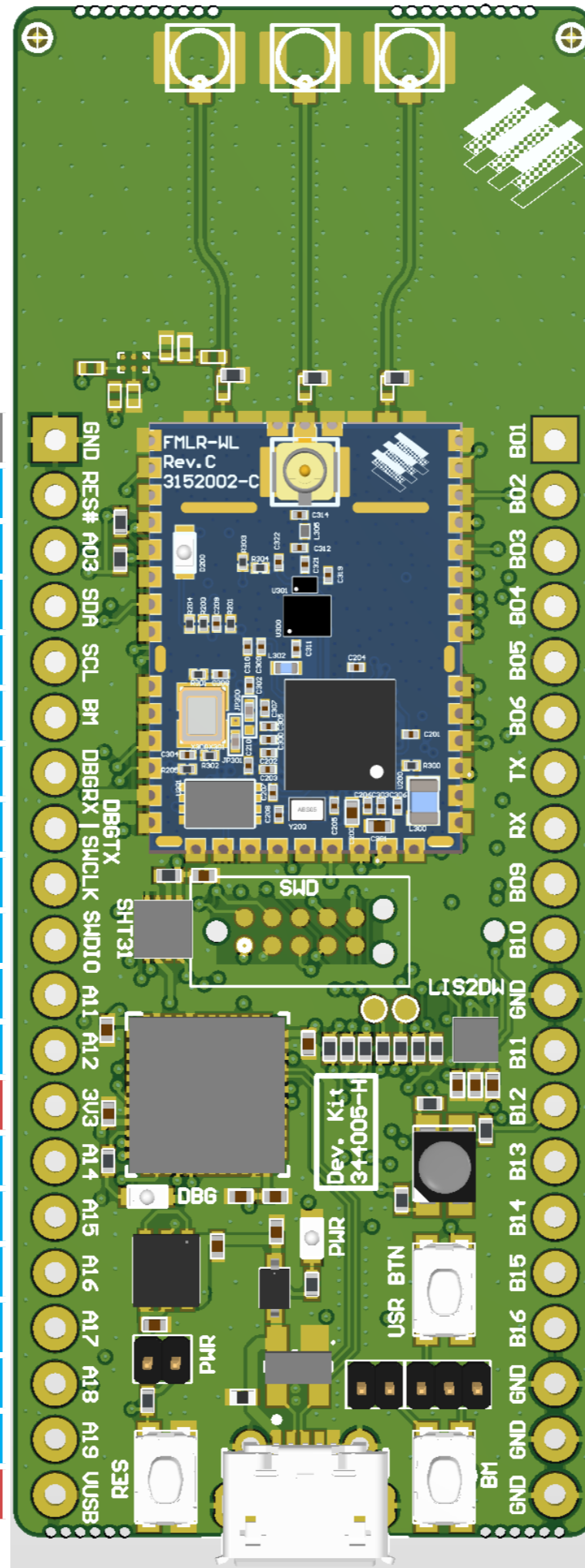
FUNCTION	MCU PAD
GND	GND
RESET	RSTN
I/O	PC13
I2C1_SDA	PB9
I2C1_SCL	PB6
BOOT0	BOOT0
USART1_RX	PA10
USART1_TX	PA9
SWCLK	PA14
SWDIO	PA13
I/O	PA12
I/O	PA11
3V3	3V3
I/O	PC7
I/O	PC6
I/O	PC10
I/O	PC11
I/O	PA15
I/O	PD2
VUSB	VUSB



MCU PAD	FUNCTION
PB0	I/O
PA0	SWITCH
PB1	I/O
PA2	USART2_TX
PA3	USART2_RX
PA5	I/O
PB5	SPI1_MOSI
PB4	SPI1_MISO
PB3	SPI1_SCK
PB2	I/O
GND	GND
PA8	I/O
PC1	LED B
PH1	LED G
PH0	LED R
PB7	I/O
PC12	I/O
GND	GND
GND	GND
GND	GND

FMLR-WL-STM
DEV-FMLR-STEVK7

FUNCTION	MCU PAD
GND	GND
RESET	RSTN
I/O	PC13
I2C1_SDA	PB9
I2C1_SCL	PB6
BOOT0	BOOT0
USART1_RX	PA10
USART1_TX	PA9
SWCLK	PA14
SWDIO	PA13
I/O	PA12
I/O	PA11
3V3	3V3
I/O	PA1
I/O	PC6
I/O	PA4
I/O	PA6
I/O	PA15
I/O	PA7
VUSB	VUSB



MCU PAD	FUNCTION
PC4	I/O
PA0	SWITCH
PB1	I/O
PA2	USART2_TX
PA3	USART2_RX
PA5	I/O
PB5	SPI1_MOSI
PB4	SPI1_MISO
PB3	SPI1_SCK
PB2	I/O
GND	GND
PA8	I/O
PC1	LED B
PC15	LED G
PC14	LED R
PB7	I/O
PC12	I/O
GND	GND
GND	GND
GND	GND